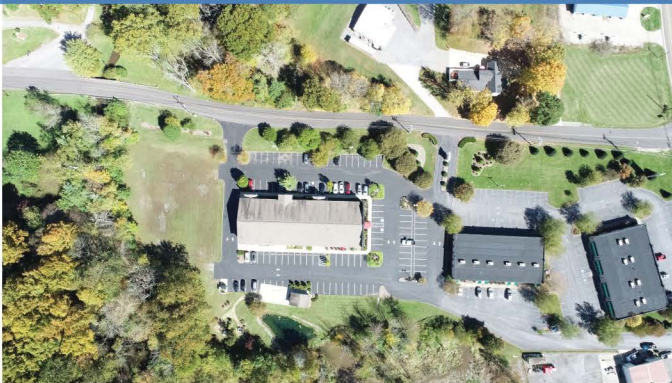




# MEADOW VIEW COMMERCIAL PROPERTY III

109 Meadow View Drive  
Bristol, TN 37620



## DEMOGRAPHICS

- 1 mile radius - Population: 2,584  
Income: \$55,661
- 3 mile radius - Population: 23,077  
Income: \$56,928
- 5 mile radius - Population: 47,339  
Income: \$56,798

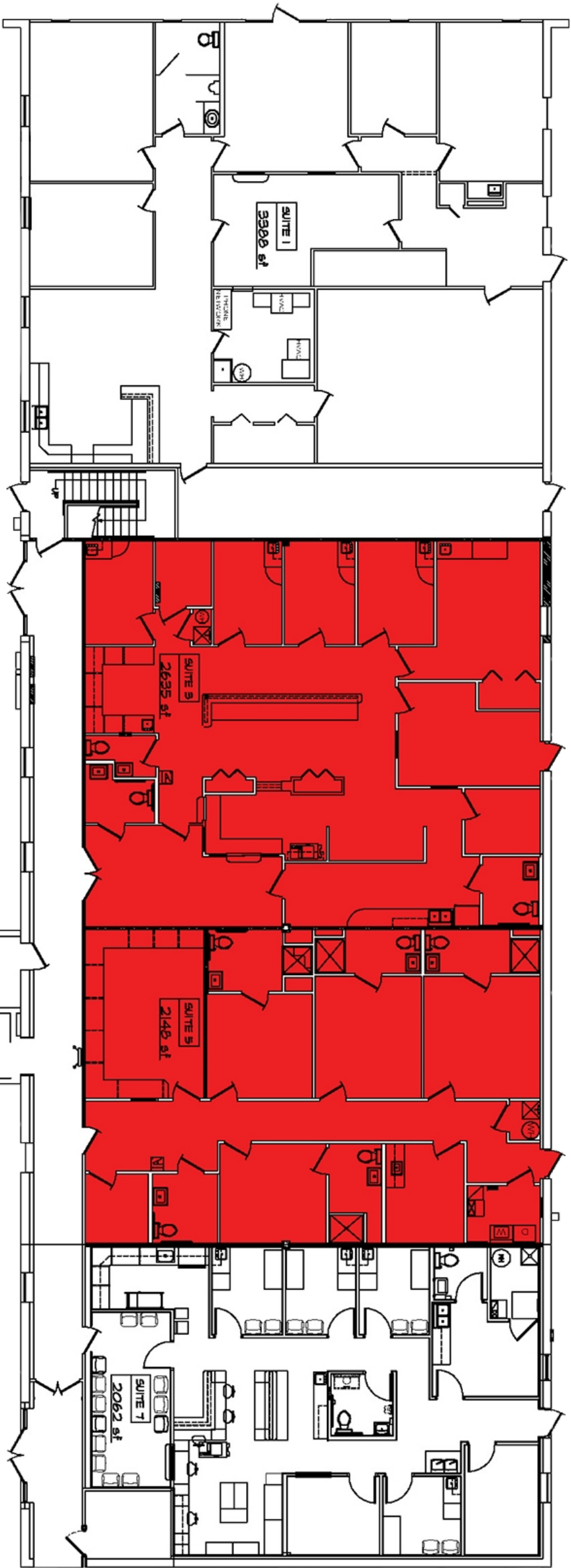


Leasing Team  
1550 Highway 126  
Bristol, TN 37620  
(423) 968-3321  
KBMCP.com

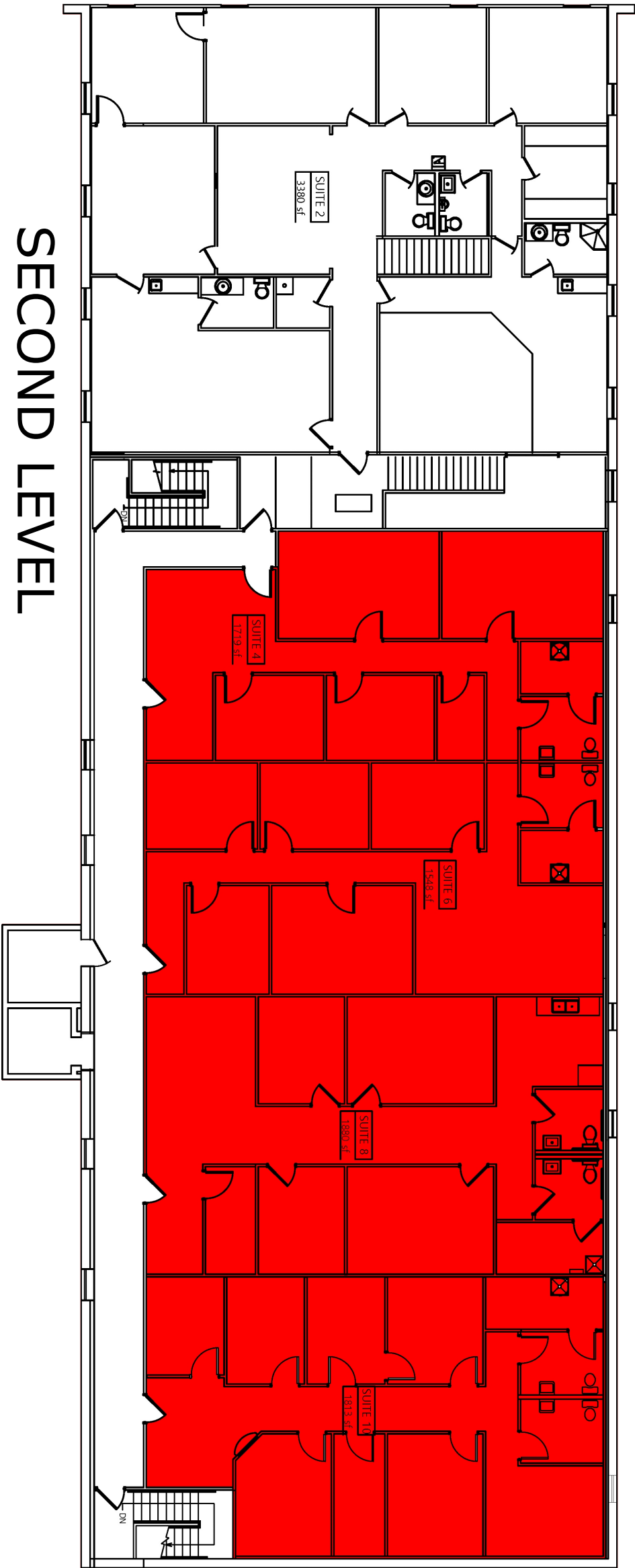
## Property Information

- Price available upon request
- Total Square Footage: 20,557SF
- Excellent visibility along with ample parking.
- Less than five minutes from Bristol Medical Park
- MCPIII features a weight loss facility, family medical physicians, respiratory care with sleep monitoring facilities, orthopedic and sports medicine with a physical therapist on site.
- Growing retail within 3 mile radius

FIRST LEVEL



SECOND LEVEL



Revisions:		
No.	Description	Date

<input checked="" type="checkbox"/> Preliminary	<input type="checkbox"/> Construction
<input type="checkbox"/> Bid	<input type="checkbox"/> Permitting
<input type="checkbox"/> Document	<input type="checkbox"/> Document

Project Number:
Date:
Drawn By:
Checked By:
<b>FLOOR</b>
Scale: